



HENDERSON ASSOCIATES ARCHITECTS

309 - 311 N. MAIN ST.  
EDWARDSVILLE, IL 62025  
618.656.6618  
fax 618.656.3999

Proposed Landscaping Project at  
**Edwardsville Township Park**  
Center Grove Road  
Edwardsville, Illinois 62025

PERMIT SET

JOB#: 2017-28  
DWN BY: RMS  
CHK BY: RMS

REVISIONS

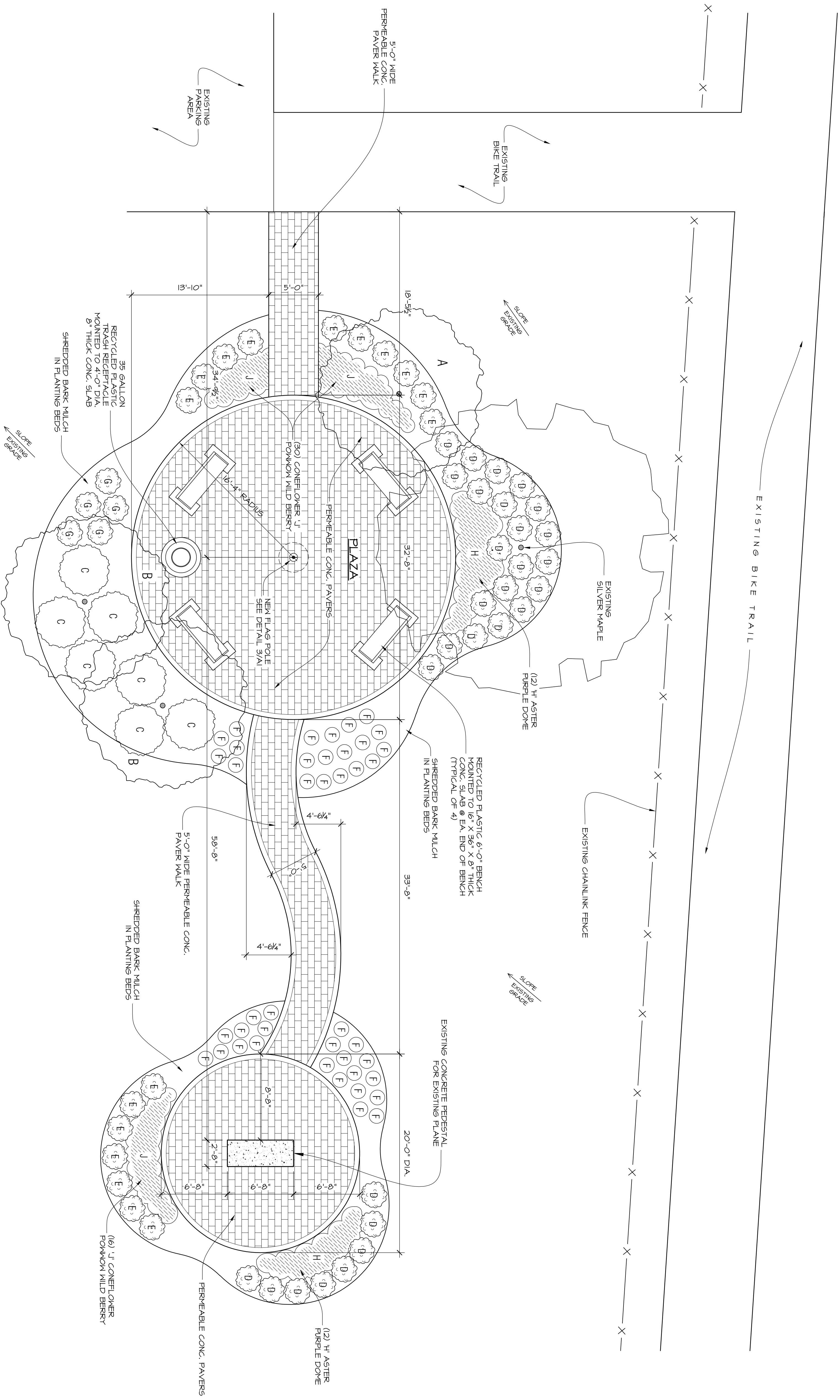


ISSUE DATE: 07.14.17

SHEET NO:

OF 2  
**A2**

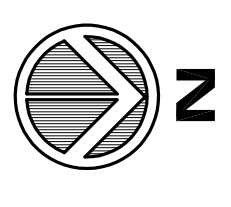
HENDERSON ASSOCIATES ARCHITECTS, INC.



**GENERAL NOTES**

1. PAVERS, BELGARD AQUA ROC W 3/8" TRAP ROCK IN JOINTS. OWNER / ARCHITECT TO SELECT COLOR & PATTERN.
2. PROVIDE ROOT STIMULATOR TO HELP NEW PLANTS ROOT-IN. 4-4-4 FERTILIZER W/ BENEFICIAL MICRO-ORGANISMS.
3. BED PREPARATION: STRIP SOIL, REMOVE UNWANTED PLANT MATERIAL, & DEBRIS.
4. INSTALL BLACK GOLD COMPOST IN PLANTING HOLES.
5. INSTALL OAK BARK MULCH IN PLANTING BEDS.
6. PROVIDE SNAPSHOT PRE-EMERGENT NEEB CONTROL IN MULCH AREAS.
7. BENCHES, CATCHER - CORONAADO & RECYCLED PLASTIC CONTOUR BENCH W/ MANGONANT BENCH COLOR & FEMTER FRAME COLOR. SURFACE MOUNT TO CONC. SLAB @ EA. END OF SLAB. INCLUDE MANUFACTURERS MOUNTING KIT.
8. TRASH RECEPTACLE: TRISORT - 35 GALLON WOODGRIND RECEPTACLE W/ RECYCLED PLASTIC TRASH RECEPTACLE MOUNTED TO 4'-0" DIA. 8" THICK CONC. SLAB. INCLUDE MANUFACTURERS MOUNTING KIT.

**LANDSCAPE PLAN**  
SCALE: 3/16" = 1'-0"



**PLANTING SCHEDULE**

Symbol	Qty	Botanical Name	Common Name	Size	Spacing	Native
A	1	Amelanchier x Grandiflora 'Autumn Brilliance'	Apple Serviceberry 'Autumn Brilliance'	6-8" B & B	16'	Yes
B	2	Magnolia 'Virginiana' 'Jim Wilson'	Sweet Bay Magnolia 'Moonglow'	6-7" B & B	16'	Yes
C	7	Rhus aromatica 'Gro-Low'	Fragrant Sumac 'Gro-Low'	3 gallon	5'	Yes
D	30	Panicum Virgatum 'Shenandoah'	Switch Grass 'Shenandoah'	5 gallon	3'	Yes
E	17	Sporobolus Helicopsis	Prairie Drossed	1 gallon	2-1/2'	Yes
F	42	Amsonia 'Blue Ice'	Arkansas Bluestar Blue Ice	1 gallon	2-1/2'	Yes
G	5	Asclepias Tuberosa 'Hello Yellow'	Butterfly Milkweed 'Hello Yellow'	1 gallon	2-1/2'	Yes
H	19	Simphyotridium Noveboracense 'Purple Dome'	Aster 'Purple Dome'	1 gallon	1-1/2'	Yes
J	46	Echinacea Purpurea 'Pastor' 702917	Coneflower 'Pastor' Wild Berry	1 gallon	1-1/2'	Yes

**PLANTING NOTES:**

1. ALL PLANT MATERIAL SHALL BE SELECTED & INSTALLED PER AMERICAN NURSERY & LANDSCAPE ASSOCIATION GUIDELINES.
2. SHREDED BARK MULCH TO BE INSTALLED @ 3" DEPTH IN PLANTING BEDS.